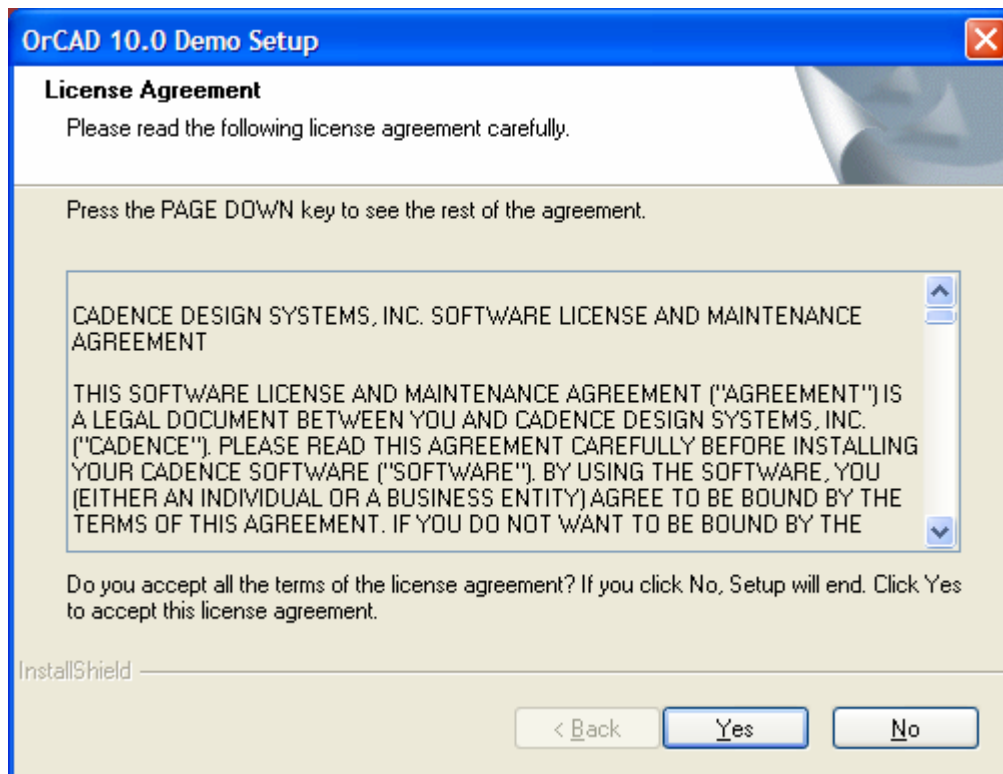


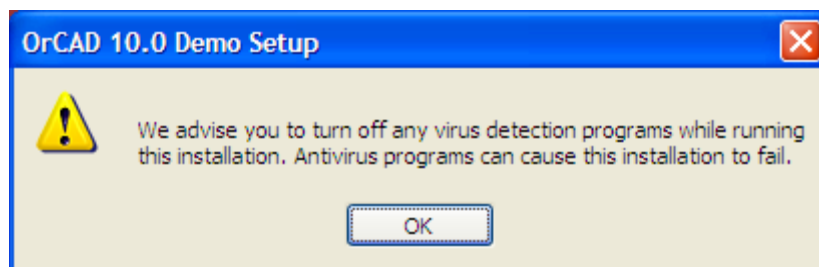
For the Installation of KCIDE Software, you have to do the following 3 steps.

Step- 1: PSpice Installation - KCIDE software works with PSpice 10.0 Version only. To Install PSpice 10.0 Student Version Follow the steps given below.

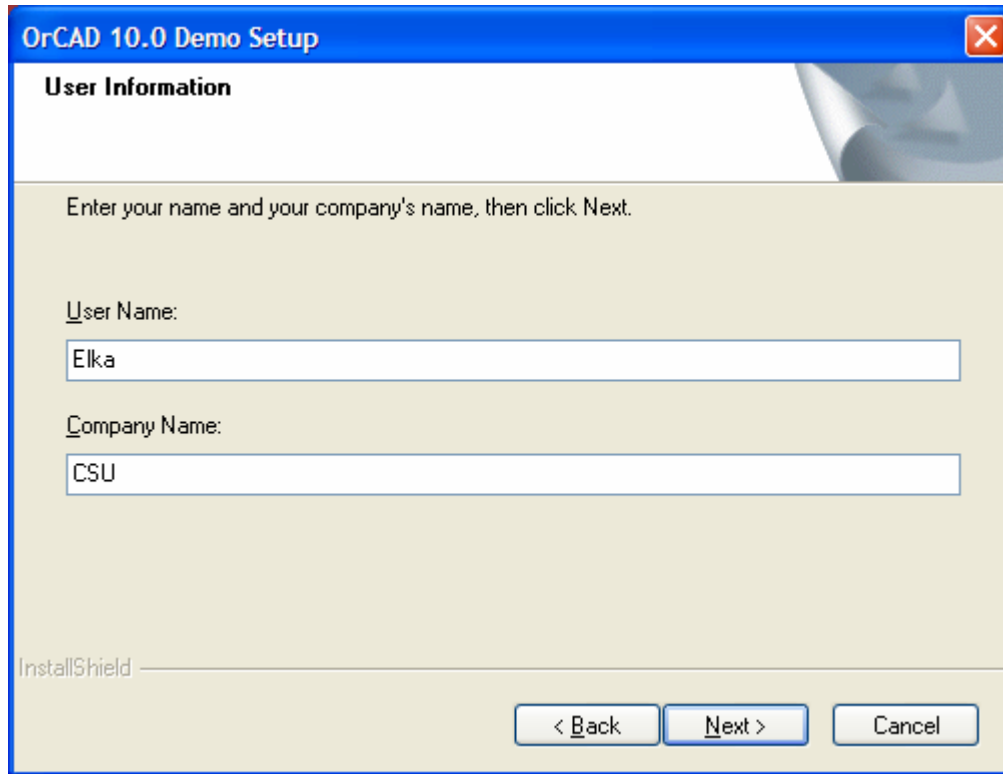
1. Double Click the OrCad 10.0 folder
2. Double Click the Setup File
3. You will get License Agreement as shown below. Click Yes button



4. You will get a warning message as shown below. Click OK button

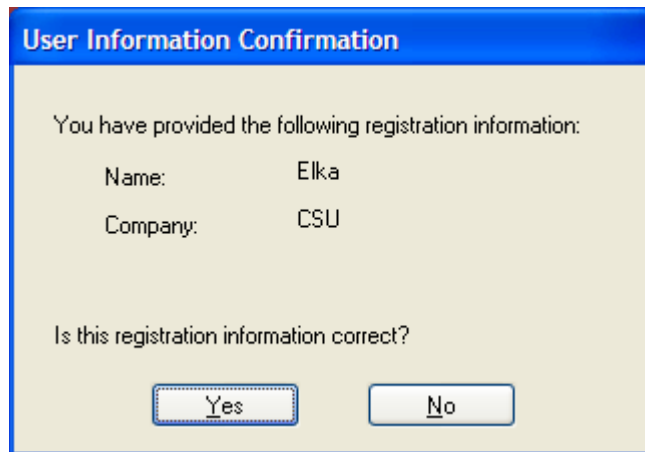


5. You will get a prompt to enter user information as shown below. Give the Information and Click Next button



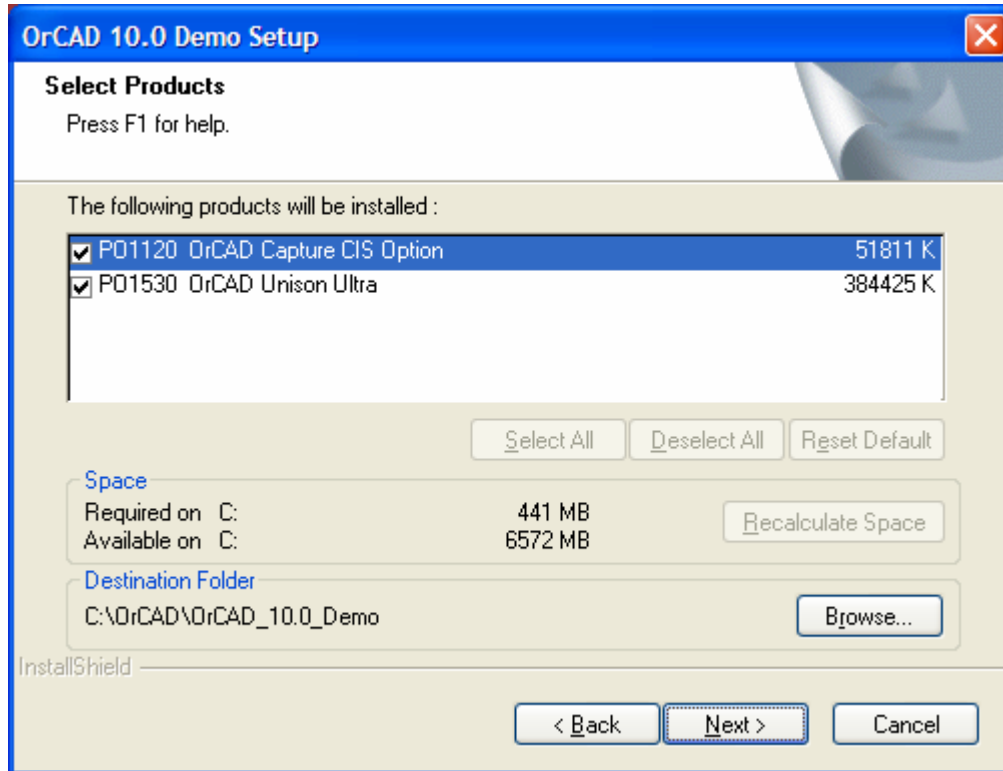
The image shows a Windows-style dialog box titled "OrCAD 10.0 Demo Setup". The main heading is "User Information". Below the heading, there is a text prompt: "Enter your name and your company's name, then click Next." There are two text input fields. The first is labeled "User Name:" and contains the text "Elka". The second is labeled "Company Name:" and contains the text "CSU". At the bottom of the dialog, there are three buttons: "< Back", "Next >", and "Cancel". The "Next >" button is highlighted, indicating it is the intended action.

6. You will get a prompt for confirmation as shown below. Click Yes button

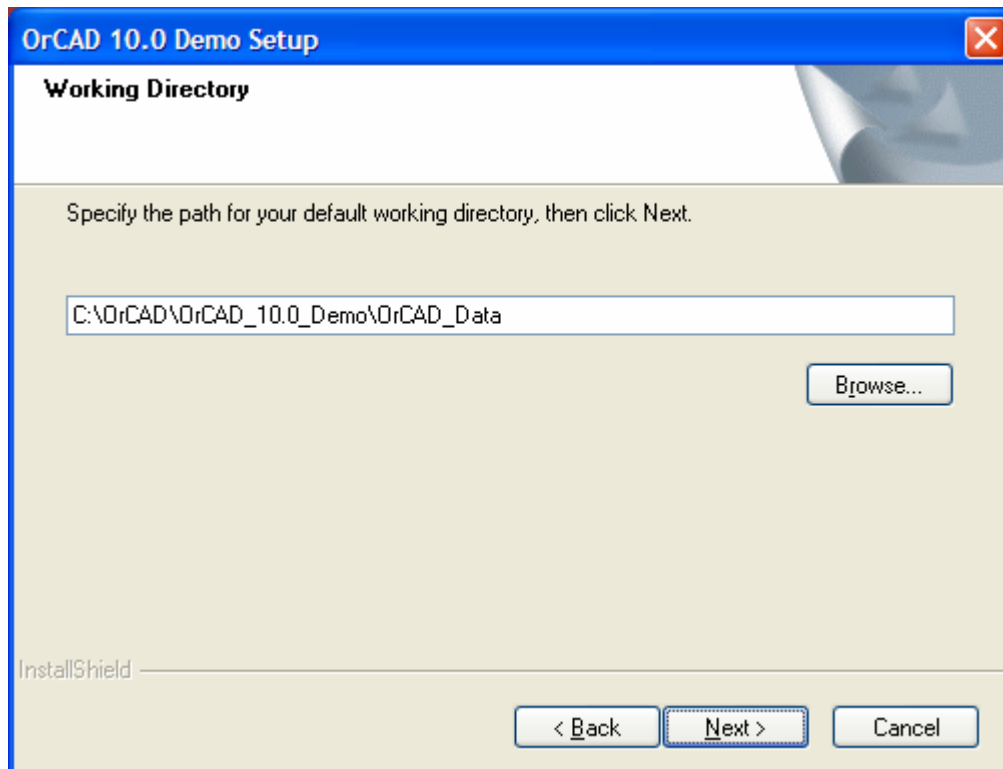


The image shows a confirmation dialog box titled "User Information Confirmation". The text inside reads: "You have provided the following registration information:" followed by a list of the entered information: "Name: Elka" and "Company: CSU". Below this, it asks "Is this registration information correct?". At the bottom, there are two buttons: "Yes" and "No". The "Yes" button is highlighted, indicating it is the intended action.

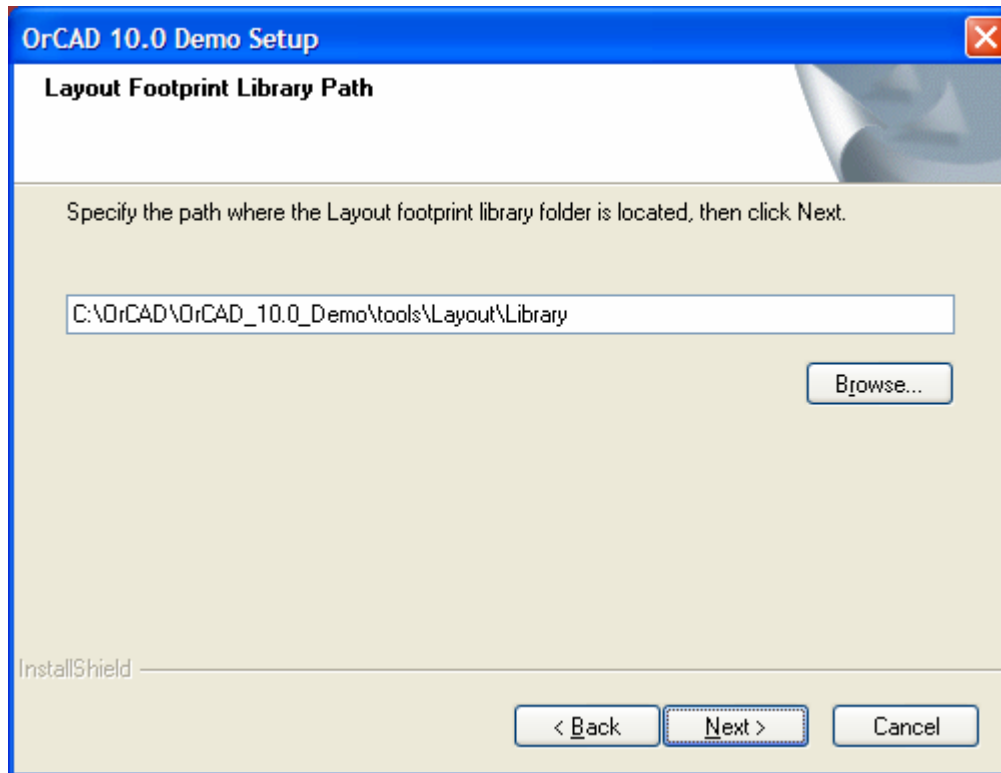
7. You will get a prompt to select the products. Click Next button



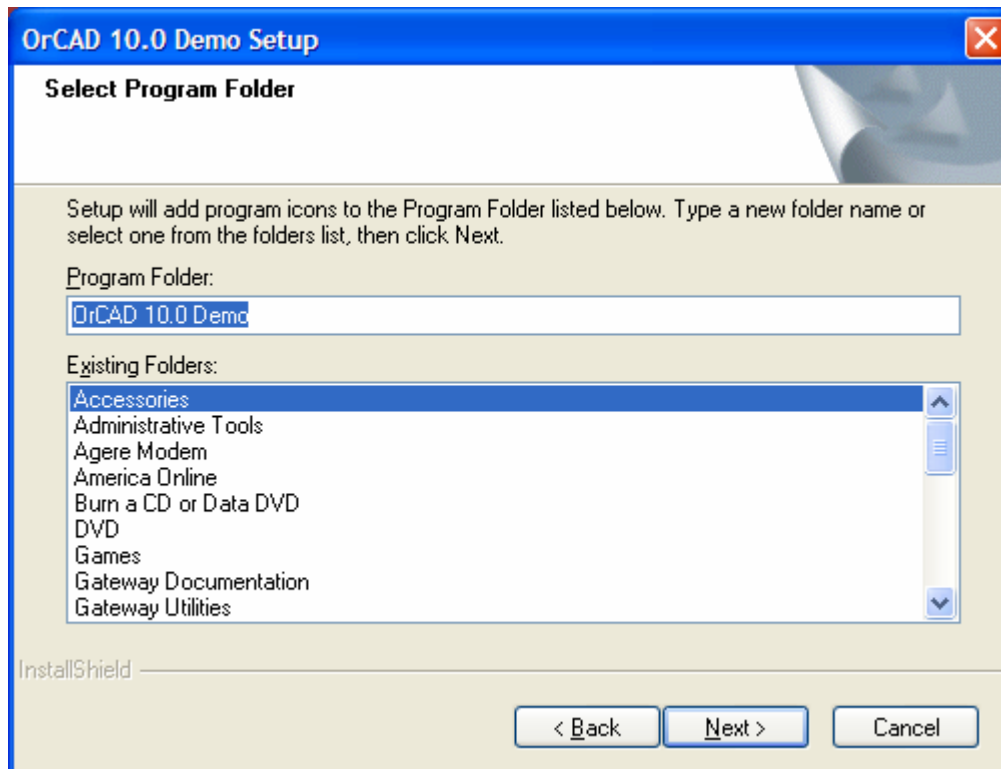
8. Working directory is shown as below. Click Next button.



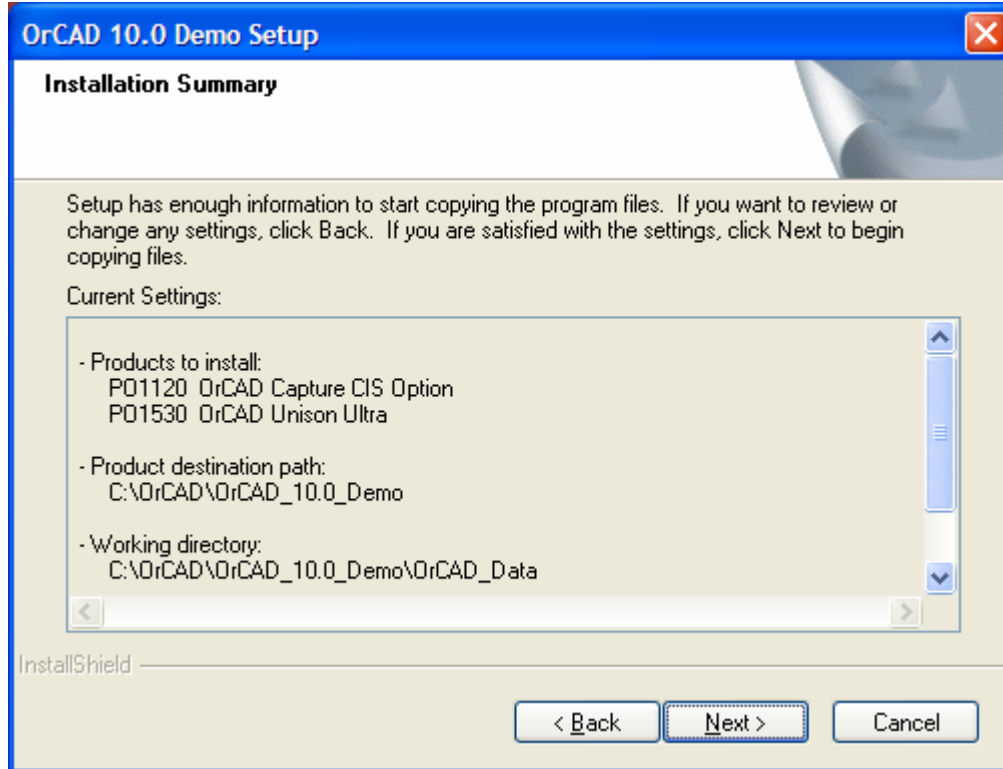
9. It will show the Layout Footprint Library Path as shown below. Click Next button



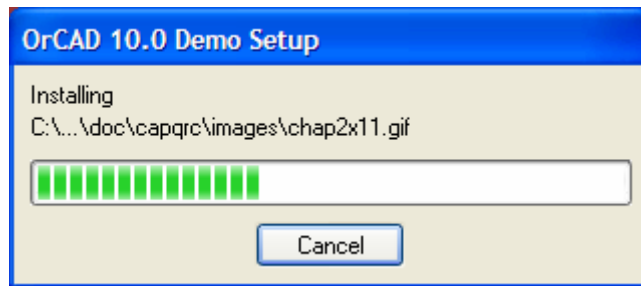
10. Installation will ask you to select the program folder. Click Next button



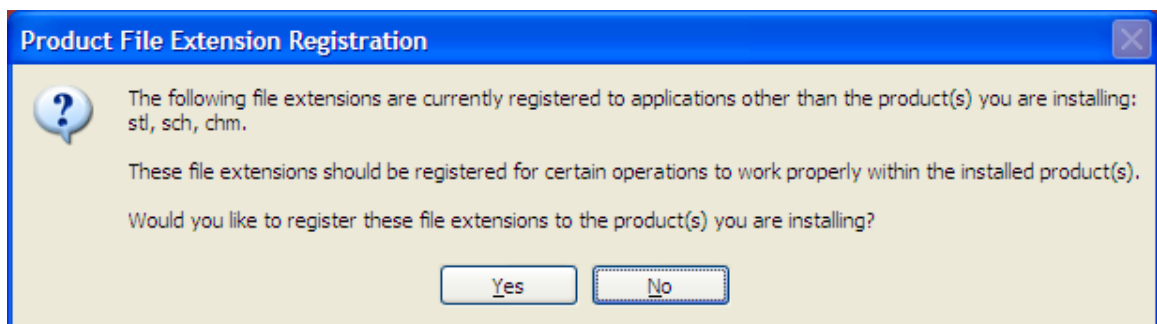
11. The Installation summary is shown. Click Next button



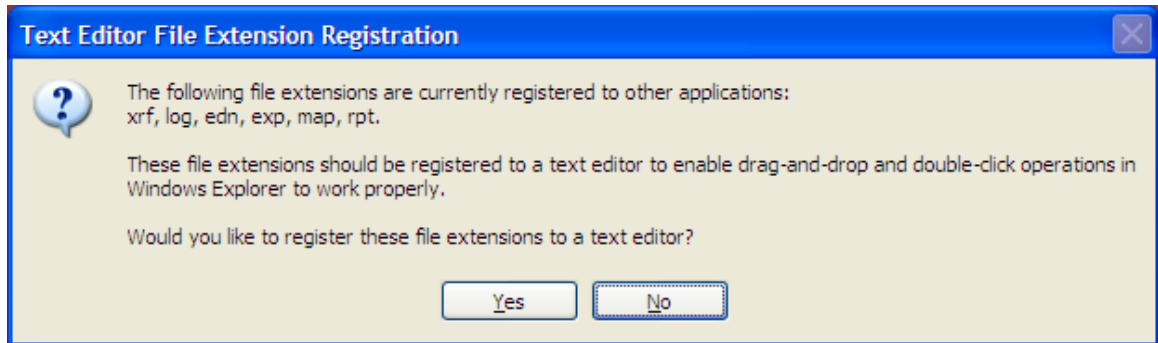
12. Installation will progress as shown below



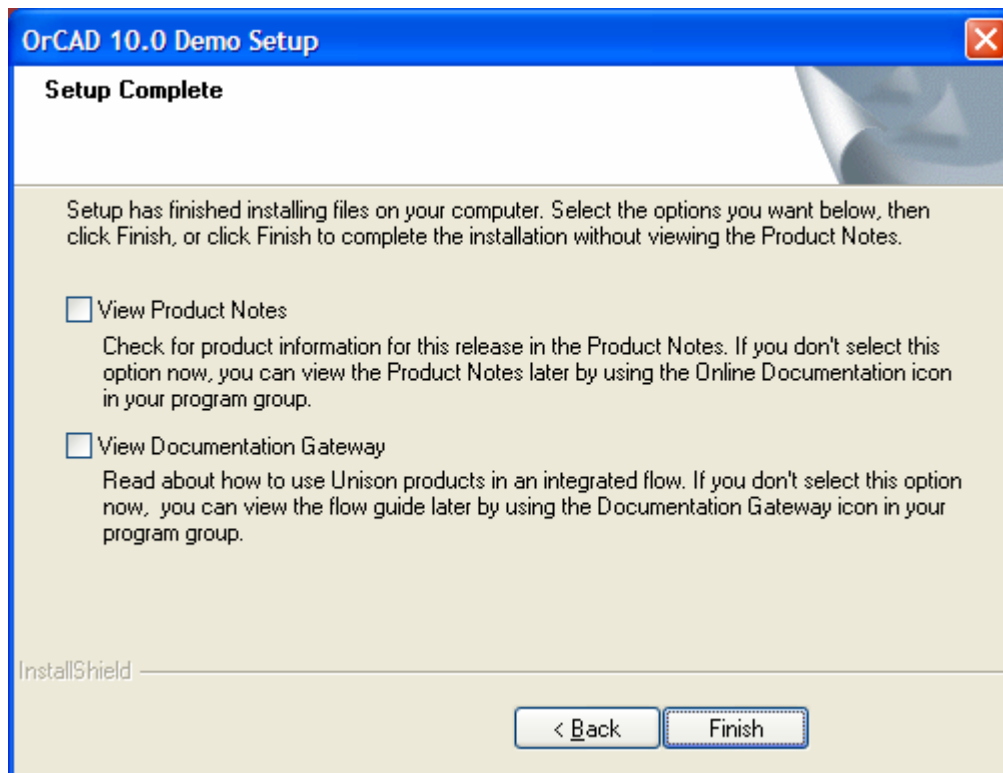
13. Now the installation will show you the following message. Click Yes button



14. Installation will show the following message for file extensions registration. Click Yes button

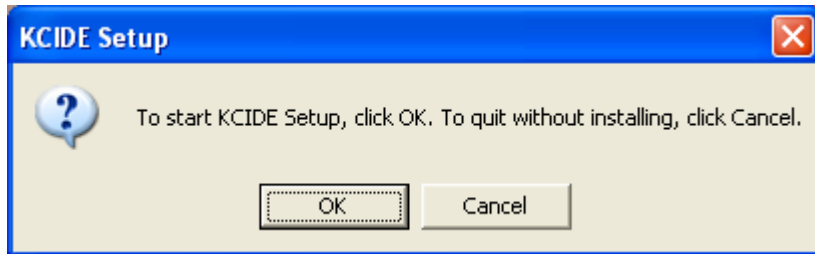


15. Installation will show the Setup complete prompt as shown below. Click Finish button

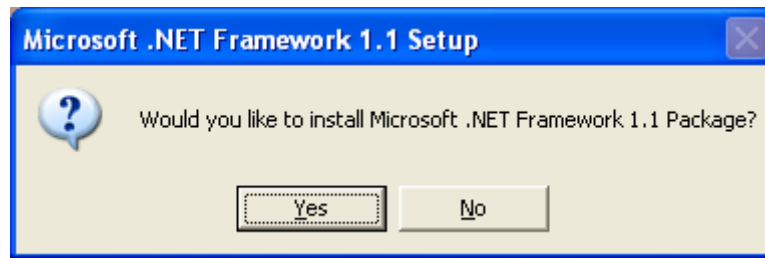


Step- 2: Installation of KCIDE Software

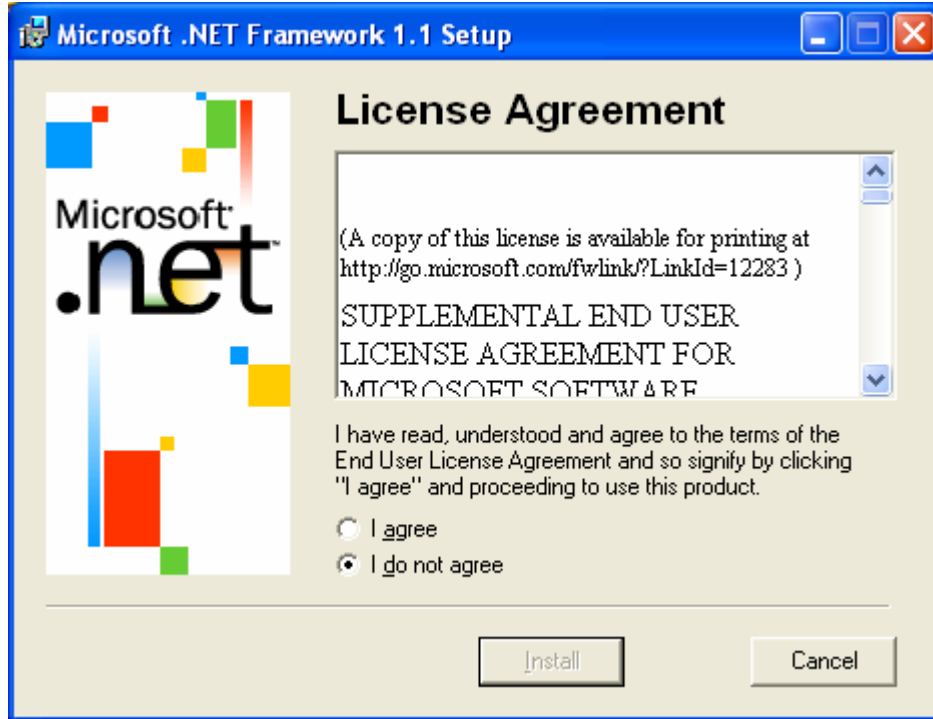
1. Double Click the Setup Folder
2. Double Click Release folder
3. Double Click Setup.exe file
4. You will receive a message box whether you want to start KCIDE Setup. Click OK



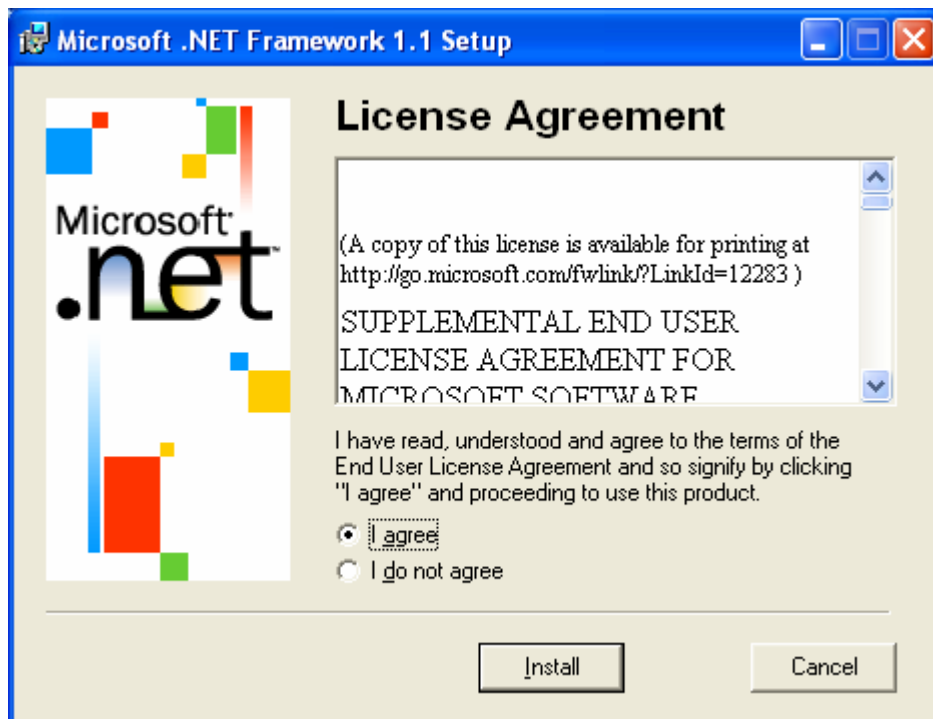
5. If your system does not has Microsoft .NET Framework 1.1 Package, it will ask would you like to install Microsoft .NET Framework 1.1 Package? Click YES. If your system has Microsoft .NET Framework 1.1 Package then it will skip Steps through 5 to 8 and go to step 9 directly.



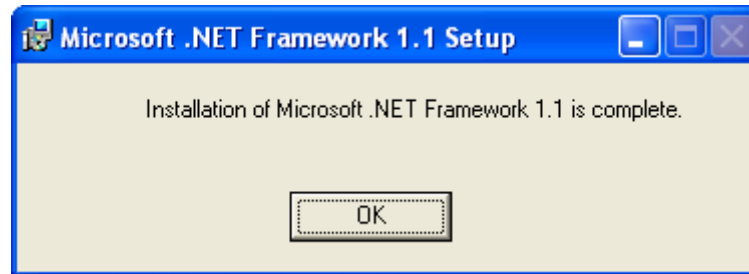
6. You will get License Agreement for .net framework.



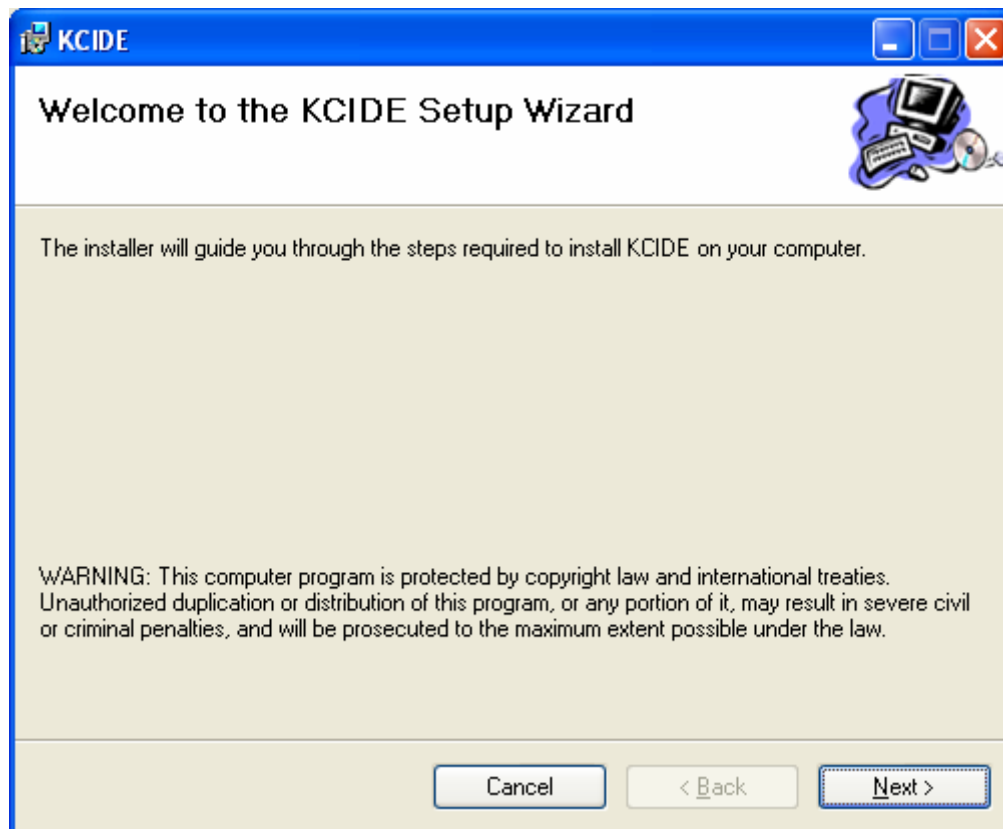
7. Click I agree radio button and then click INSTALL button



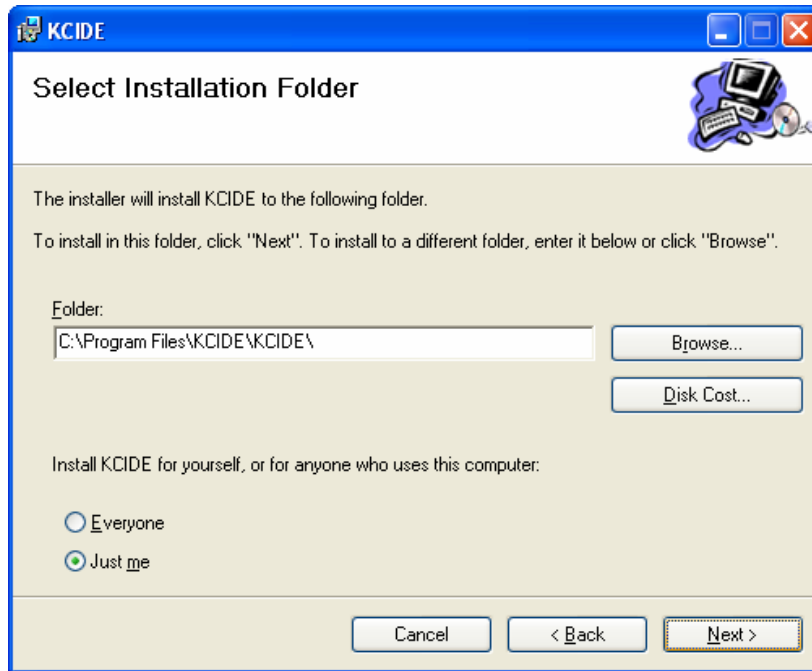
8. You will get a Message that Installation of Microsoft .NET Framework 1.1 is complete. Click OK



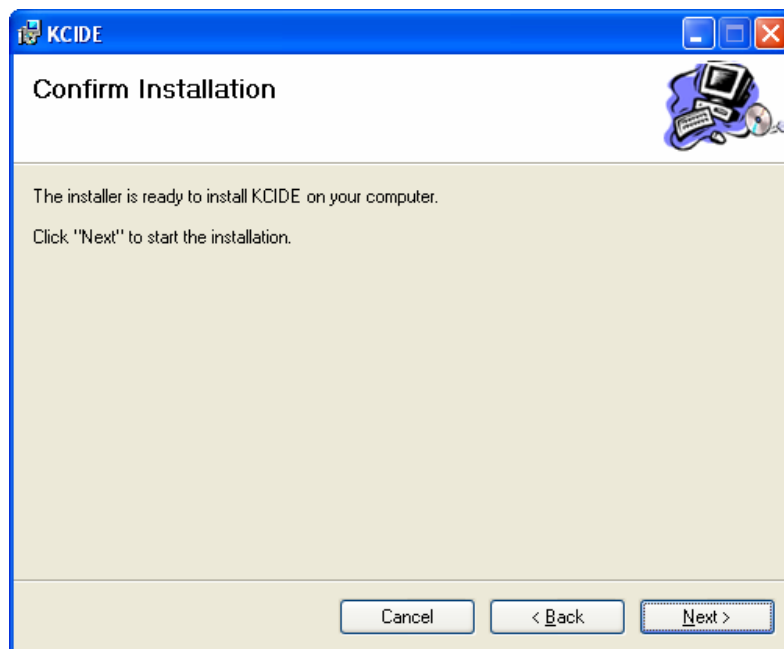
9. Now you will be prompted with the Welcome to KCIDE Setup Wizard. Click Next to Continue.



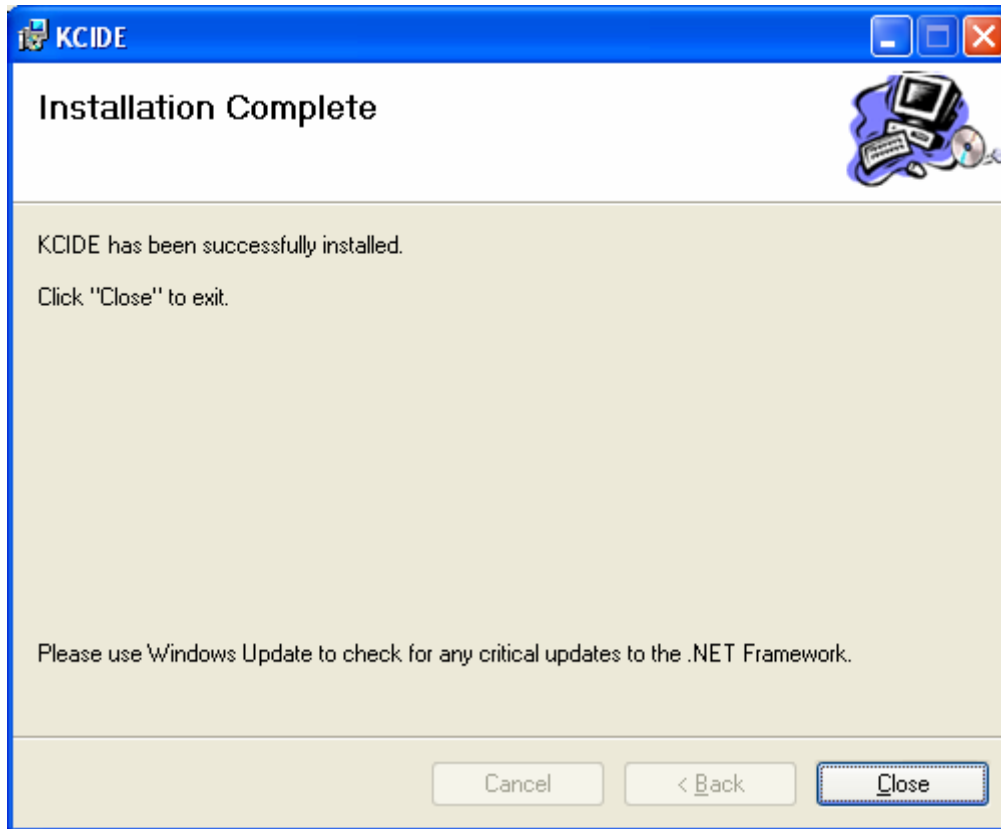
10. You will be asked to select the installation folder. The setup will point to Program files of your system automatically as shown below. If you want to install IDE in program files click Next else browse for the installation folder and click OK button.



11. The installation will ask for conformation as shown below. Click Next to install



12. The installation will now show the installation complete window as shown below.
Click Close to exit the Setup Wizard



13. Installation wizard will show a message box called installation succeeded. Click OK



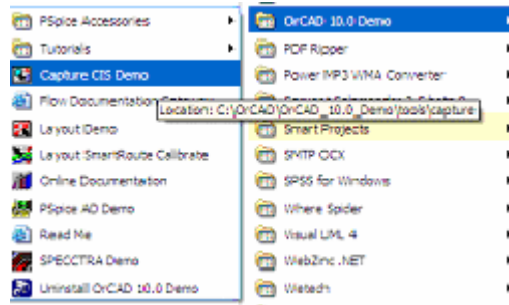
14. You can see a shortcut as shown below on the systems desktop.



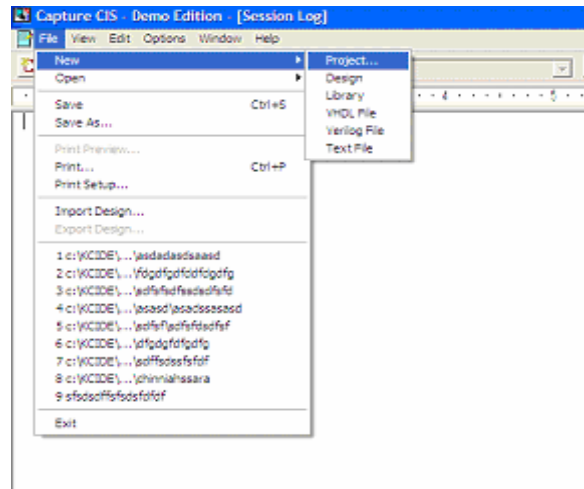
Step- 3: File Association

After installation, file association step has to be done to make the software work.

1. Opening PSpice –Click START button, locate the OrCAD 10.0 Demo in the program menu and open Capture CIS Demo as shown below



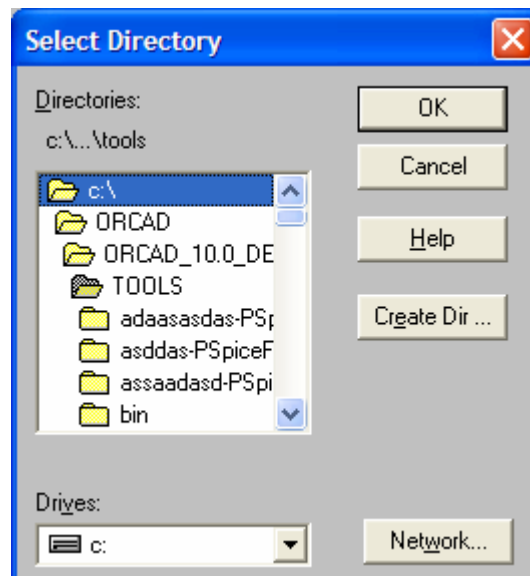
2. When the Capture CIS Demo Edition window opens
Click File→New→Project



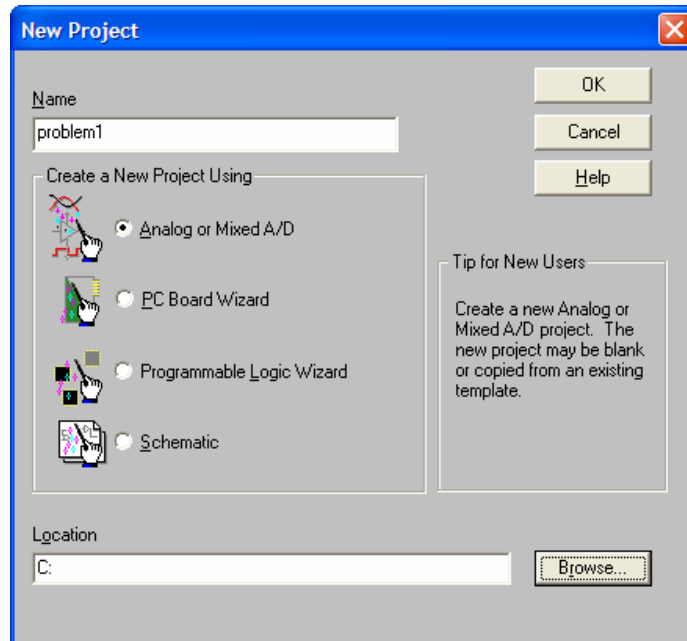
3. Give a Name to the project, select “Analog or Mixed A/D” option
Click Browse to select a location to save the project files



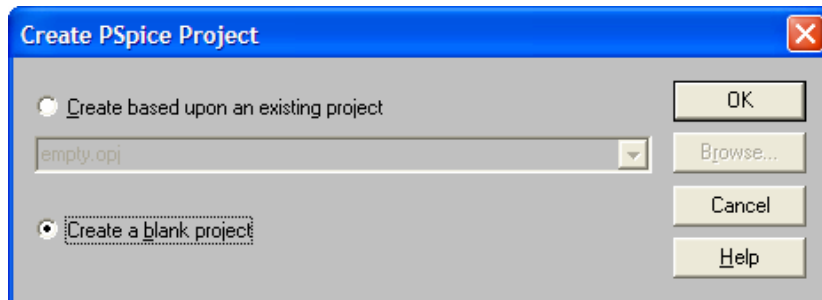
4. Select a location as shown below in the figure



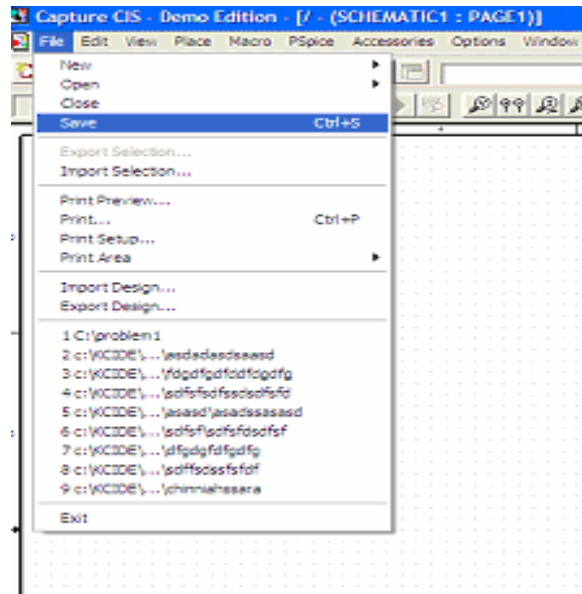
5. Click OK after selecting a Location



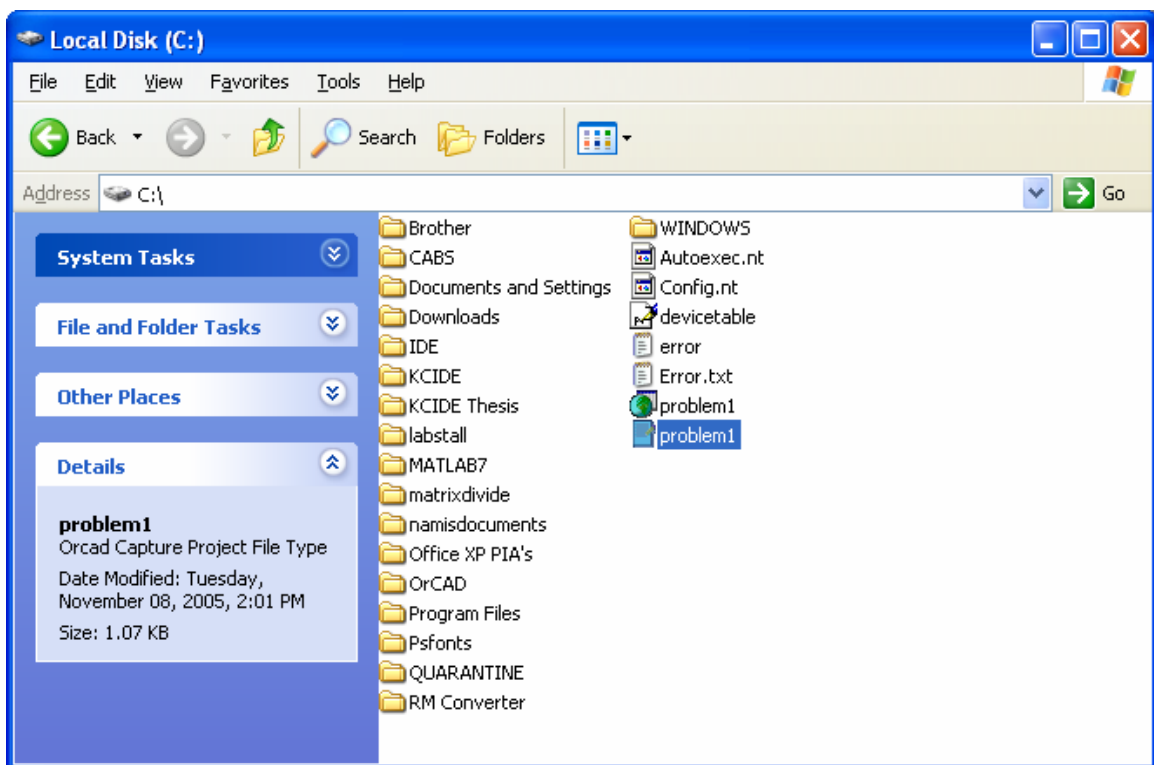
6. You will get a Message box like below, select “Create a blank project” option and click OK



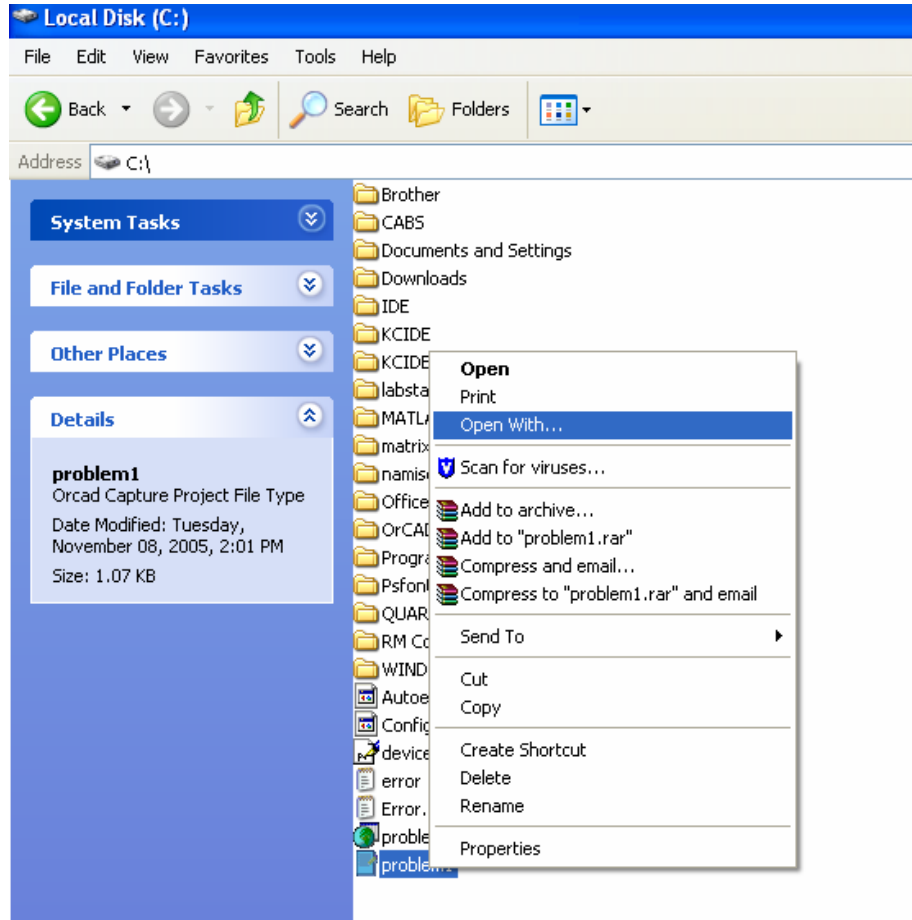
7. When the new project opens, click File→Save to save the project



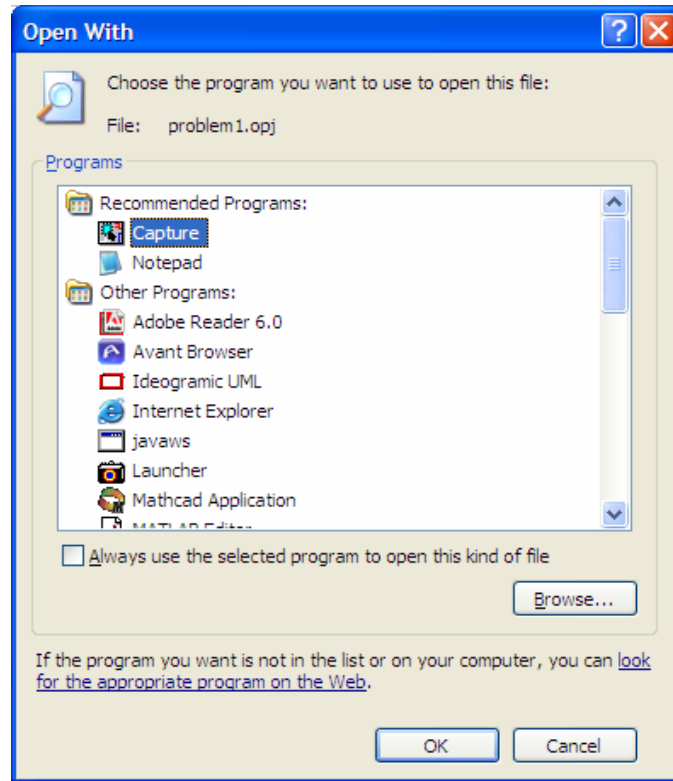
8. Open the Location of the project we saved in the previous step



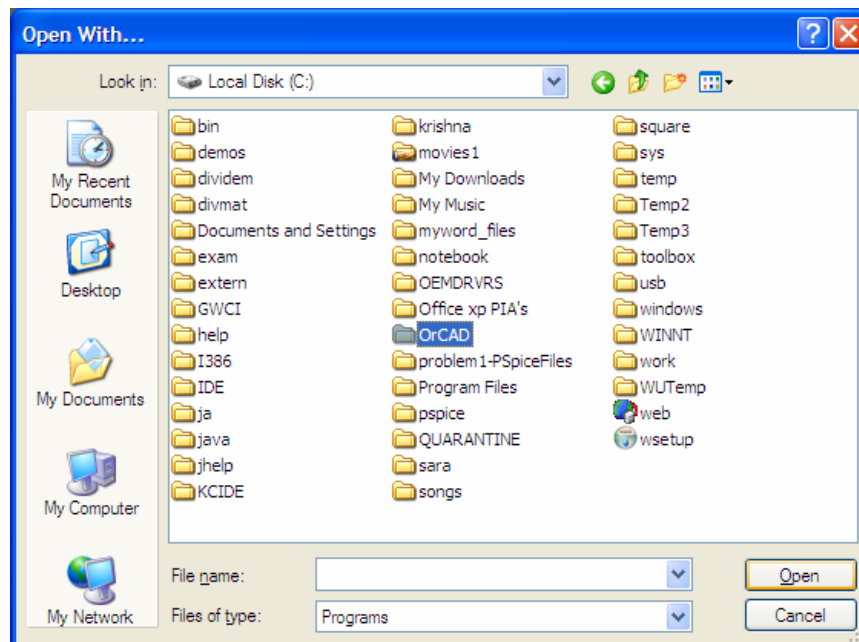
9. There will be two files created for the project, locate the file with the extension .opj and right click on it and chose Open With as shown below.



10. A new window opens as shown below asking for location of the Orcad Software
Click Browse in the window

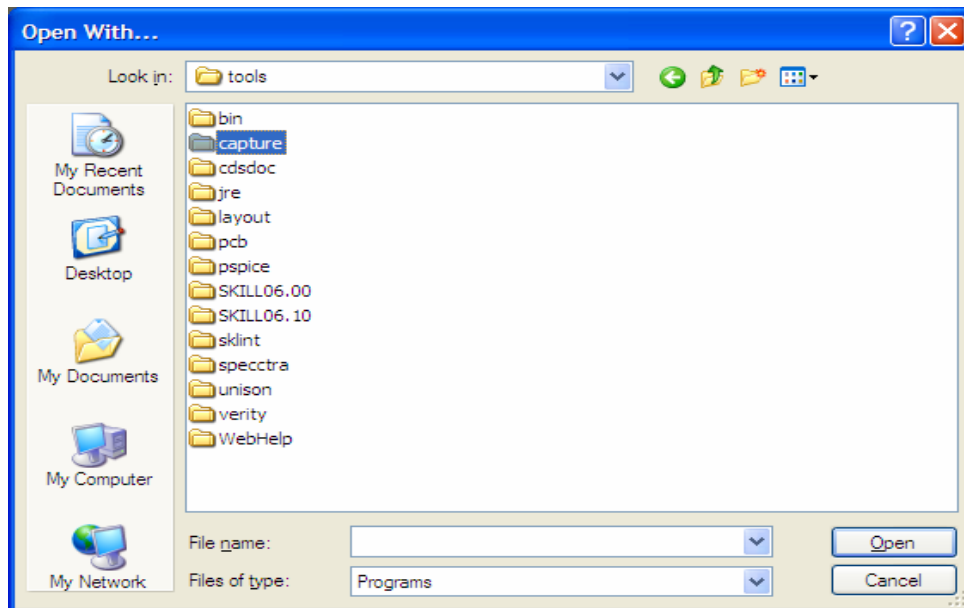


11. Locate the Installation Path of OrCAD.
The default location of the software is C:\OrCAD\OrCAD_10.0_Demo



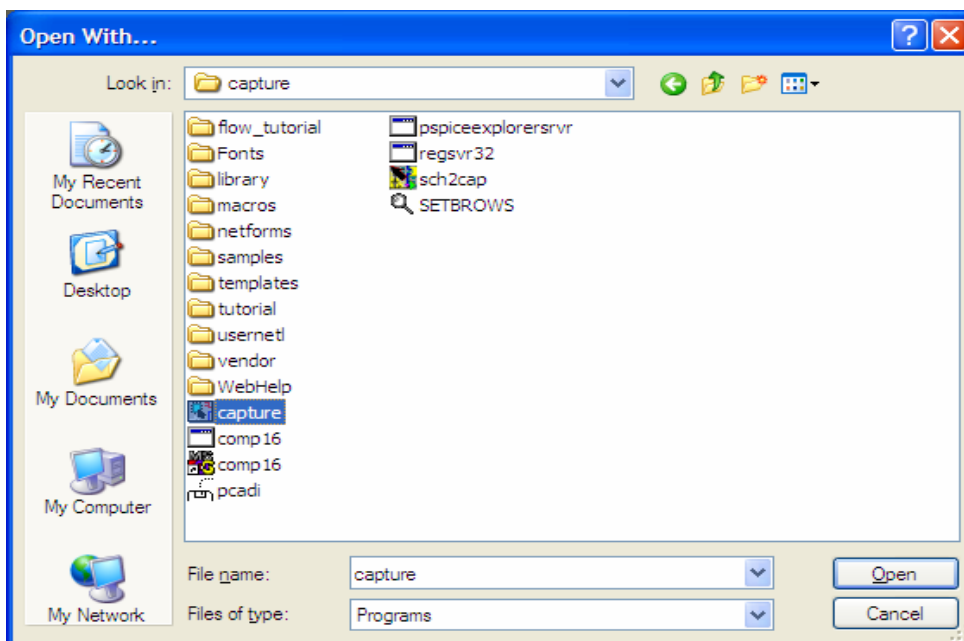
12. Browse for capture folder as shown below

The default hierarchy of location is C:\OrCAD\OrCAD_10.0_Demo\tools\capture

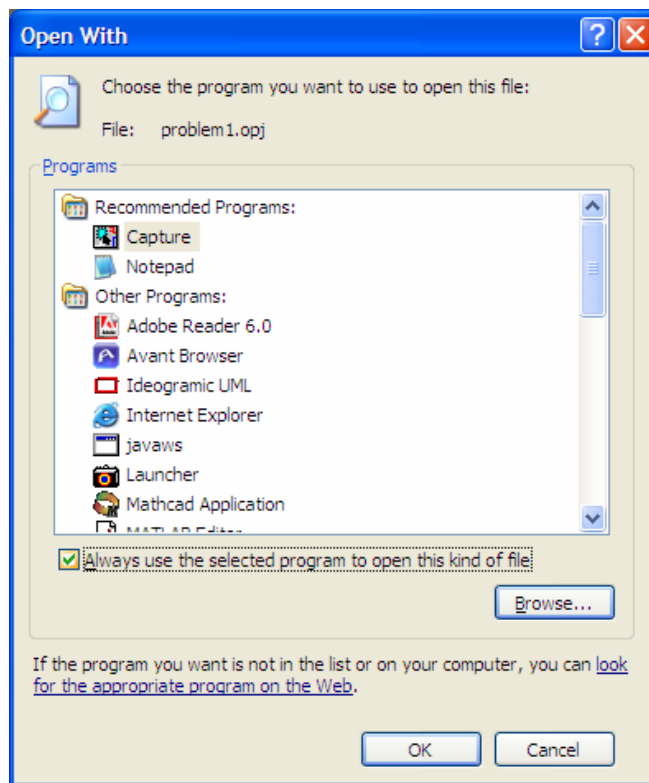


13. After opening the capture folder locate the exe called capture.exe

Click Open, which returns us to the previous window



14. In this window make sure that the checkbox which says “Always use the selected program to open this kind of file” is checked and click OK.



15. Double click the shortcut on desktop to open the KCIDE software.

